

# AUTOMATION FOR A BETTER, SAFER KITCHEN



The MenuPilot® application, coupled with streamlined corporate management of menu data via the MenuCommand® web portal, reduces dependence on hardware and increases emphasis on platform. Together, these facilitate the centralized management and communication of critical menu data and training materials to foodservice operations. DayMark also delivers companion hardware with the Matt85™ and Matt77™ direct thermal label printers, facilitating on-demand production of shelf-life, food rotation and complex grab & go product labeling.



THE DIFFERENCE IS NIGHT AND DAY.™

800.847.0101

[daymarklabels.com](http://daymarklabels.com)

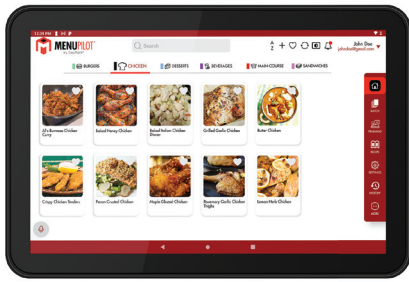
#3492-DIS  
030824

**DayMark**<sup>®</sup>  
Safety Systems

# Kitchen Automation Platform

## Features and Benefits

- Accessible from any internet connection
- Shelf life, nutritional facts, allergen information and prep data can be organized, monitored and modified virtually anytime and anywhere
- Updates are securely and efficiently pulled in via the cloud
- Data changes can be communicated to staff at all locations immediately
- Video and recipe data can be uploaded at a central location and automatically shared with all connected store locations
- Provides a comprehensive overview, including announcements, account metrics and number of users currently using the platform
- Allows users to print labels wirelessly
- Eliminates the need to make costly repairs and maintain labor-intensive repair depots
- The Matt85™ prints die-cut labels while the Matt77™ printer offers continuous-feed labeling
- MenuPilot is available for download on both iOS and Android tablets
- The Matt85 is compatible with Android and iOS tablets, while the Matt77 is compatible with Android tablets only



### Complete Food Labeling System

	Item #	Description
A	<b>IT118379</b>	Matt85 Printer
B	<b>IT119279</b>	Matt77 Printer
C	<b>IT118562</b>	Wall Mount Bracket for Matt85 & Matt77 Printers

## Direct Thermal Labels

**A**

**B**

**C**

**D**

**E**



FOOD SAFETY

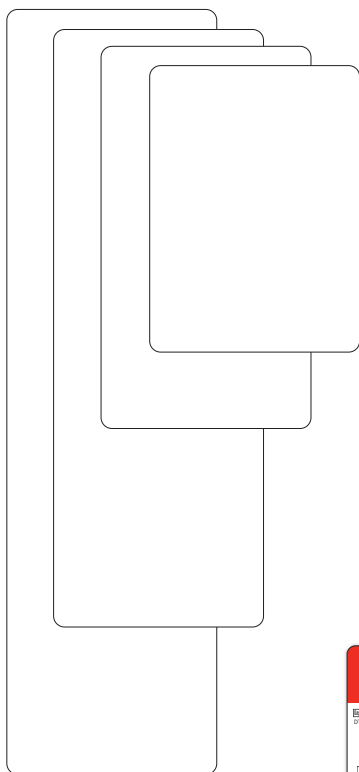


KITCHEN AUTOMATION

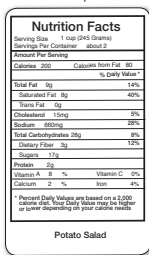
THE DIFFERENCE IS NIGHT AND DAY.™

## Direct Thermal Labels

F-I



Examples

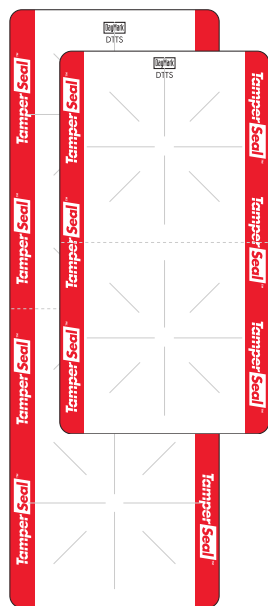


Matt85

	Size	Description	Adhesive	Quantity	IT Code
A	1.2" x 1"	Blank Label	MoveMark™	2000/roll	<b>IT115739</b>
			DuraMark™	2000/roll	<b>IT115734</b>
			DissolveMark®	2000/roll	<b>IT115853</b>
B	2.2" x 1"	Blank Label	ToughMark™	2000/roll	<b>IT115695</b>
			DissolveMark®	2000/roll	<b>IT115691</b>
			MoveMark™	2000/roll	<b>IT115740</b>
			DuraMark™	2000/roll	<b>IT115735</b>
C	2.2" x 2"	Blank Label	ToughMark™	1000/roll	<b>IT115697</b>
			DissolveMark®	1000/roll	<b>IT115693</b>
			MoveMark™	1000/roll	<b>IT115741</b>
			DuraMark™	1000/roll	<b>IT115736</b>
D	2.2" x 1"	Day of the Week	ToughMark™	2000/roll	<b>IT115696</b>
			DissolveMark®	2000/roll	<b>IT115692</b>
			MoveMark™	2000/roll	<b>IT115742</b>
E	2.2" x 2"	Day of the Week	ToughMark™	1000/roll	<b>IT115698</b>
			DissolveMark®	1000/roll	<b>IT115694</b>
			MoveMark™	1000/roll	<b>IT115743</b>
F	2.2" x 3"	Blank Label	DuraMark™	750/roll	<b>IT115737</b>
G	2.2" x 4"	Blank Label	DuraMark™	500/roll	<b>IT115738</b>
H	2.2" x 6.25"	Blank Label	DuraMark™	350/roll	<b>IT117418</b>
I	2.2" x 8"	Blank Label	DuraMark™	250/roll	<b>IT117814</b>
J	2.2" x 4"	Tamper Evident	TamperSeal™	500/roll	<b>IT118675</b>
K	2.2" x 6.25"	Tamper Evident	TamperSeal™	350/roll	<b>IT118676</b>
L, M, N	2.2" x 193'	Blank Continuous Feed	DuraMark™	193ft/roll	<b>IT119160</b>
			ToughMark™	193ft/roll	<b>IT119163</b>
			DissolveMark®	193ft/roll	<b>IT119162</b>

Matt77

J, K



L, M, N



\*Labels shown are not actual size.

800.847.0101

daymarkkabels.com







# AUTOMATED FOOD LABELING FOR A BETTER, SAFER KITCHEN



## Cloud-based Corporate Dashboard

Secure, centralized oversight of menu items, recipes and training information



## App-driven Kitchen Interface

Ensured efficiencies and food labeling compliance at the location level



## Plus... Wireless Hardware

Bluetooth-enabled, direct thermal printers

## Labeling Adhesives for Every Application



### DissolveMark™ - \$\$\$

- Dissolvable adhesive & label face
- Dissolves completely in 30 seconds in any water temperature
- Leaves no adhesive residue
- Only patented direct thermal, dissolving label
- Working temp. -40°F to 176°F
- Min. application temp. 21°F
- FSC®-certified



### ToughMark™ - \$\$

- Repositionable adhesive
- Label face is virtually tear-proof
- Easiest to remove and transfer
- Leaves no adhesive buildup
- Working temp. -40°F to 200°F
- Min. application temp. 40°F



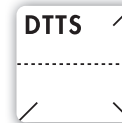
### MoveMark™ - \$

- Removable adhesive
- Easy to remove and transfer
- Leaves no adhesive buildup
- Working temp. -40°F to 160°F
- Min. application temp. 10°F



### DuraMark™ - \$

- Permanent adhesive
- Working temp. -40°F to 160°F
- Min. application temp. 10°F



### TamperSeal™ - \$\$

- Aggressive adhesive
- Tamper evident
- Working temp. -65°F to 160°F
- Min. application temp. 35°F

\*DayMark labels are FDA approved for indirect food contact.



FOOD SAFETY



KITCHEN AUTOMATION

THE DIFFERENCE IS NIGHT AND DAY.™

800.847.0101

daymarklabels.com



Safety Systems